

HEADLAMP -CONVENTIONAL TYPE-

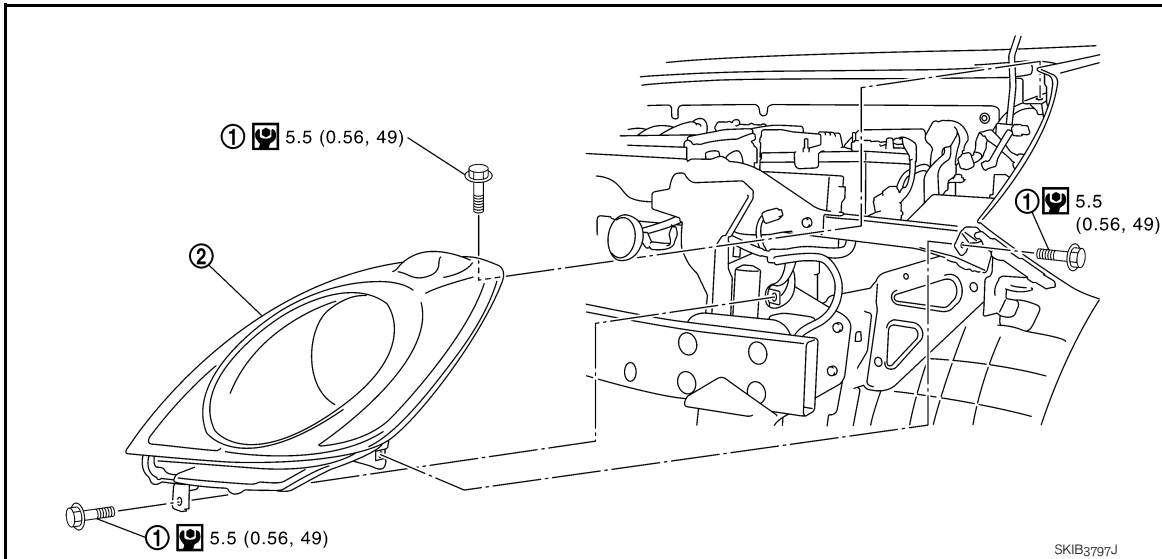
< SERVICE INFORMATION >

Front turn signal lamp

: 12V - 21W (amber)

Removal and Installation

INFOID:000000003463004



1. Bolt

2. Headlamp

REMOVAL

1. Disconnect the battery cable from the negative terminal.
2. Remove front bumper. Refer to [EI-5](#).
3. Remove headlamp mounting bolts.
4. Pull headlamp toward the vehicle front, disconnect connector, and remove headlamp.

CAUTION:

When removing headlamps, put a shop cloth or something similar between headlamps and bumper to protect bumper.

INSTALLATION

Installation is the reverse order of removal.

Headlamp mounting bolt



: 5.5 N·m (0.56 kg-m, 49 in-lb)

NOTE:

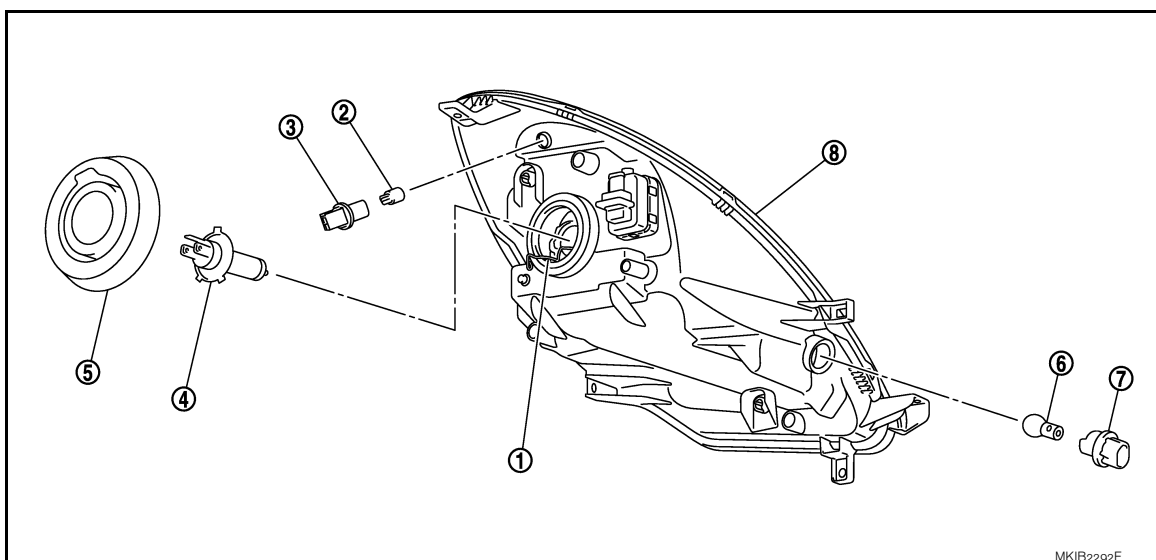
After installation, perform aiming adjustment. Refer to [LT-26. "Aiming Adjustment"](#).

HEADLAMP -CONVENTIONAL TYPE-

< SERVICE INFORMATION >

Disassembly and Assembly

INFOID:000000003463005



- | | | |
|---------------------------------------|----------------------------------|---|
| 1. Retaining spring | 2. Parking (clearance) lamp bulb | 3. Parking (clearance) lamp bulb socket |
| 4. Halogen bulb (High/Low) | 5. Back cover | 6. Front turn signal lamp bulb |
| 7. Front turn signal lamp bulb socket | 8. Headlamp housing assembly | |

DISASSEMBLY

1. Disconnect the socket connected to the bulb (High/low).
2. Remove back cover.
3. Unlock retaining spring and remove bulb (High/Low).
4. Turn parking (clearance) lamp bulb socket counterclockwise and unlock it.
5. Remove parking (clearance) lamp bulb from its socket.
6. Turn front turn signal lamp bulb socket counterclockwise and unlock it.
7. Remove front turn signal lamp bulb from its socket.

ASSEMBLY

Assembly is the reverse order of disassembly.

CAUTION:

- After installing bulb, be sure to install plastic cap and bulb socket securely to insure watertightness.